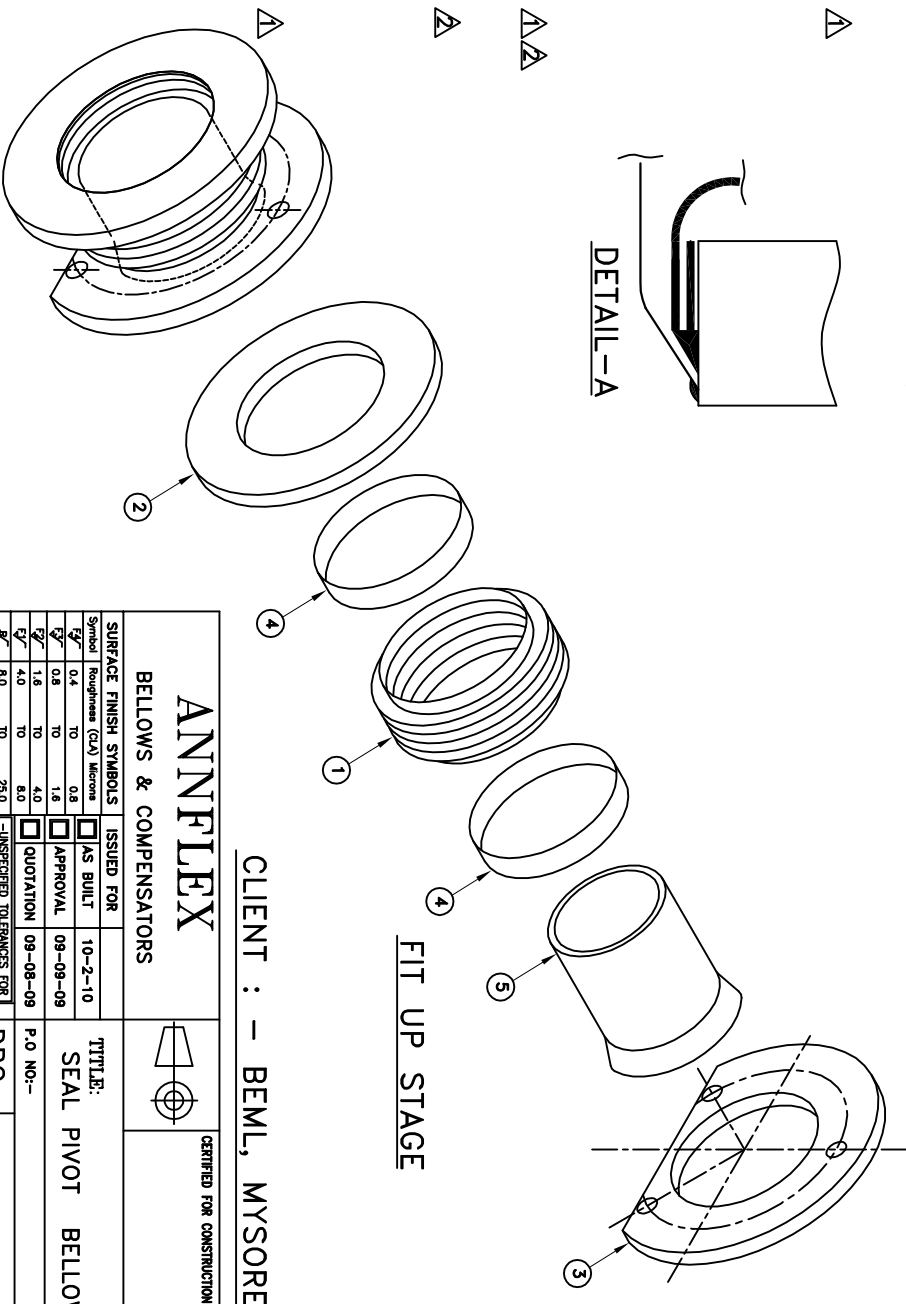
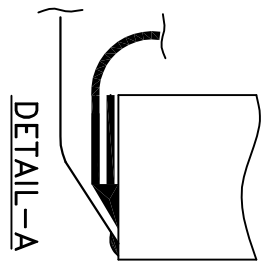
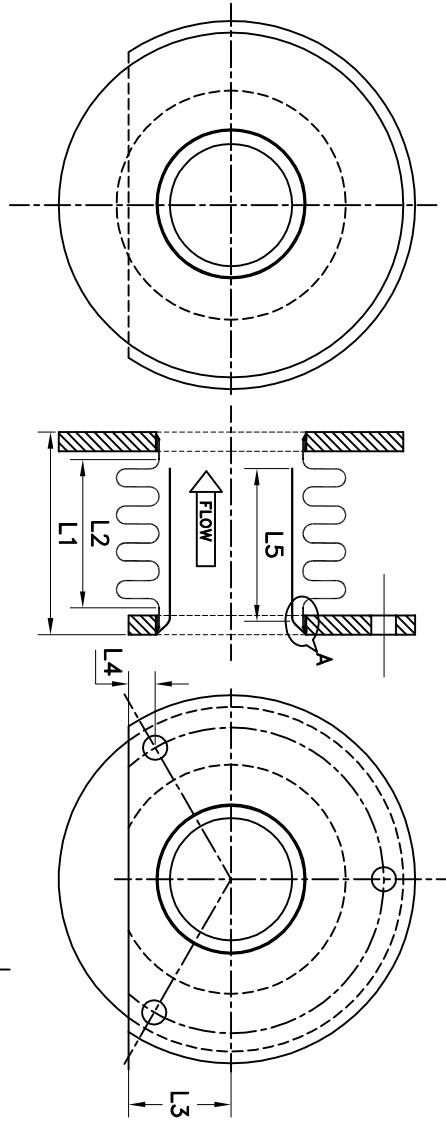


**IMPORTANT NOTE: - THIS DRAWING IS THE PROPERTY OF "ANNFLEX" & HAS BEEN PROTECTED BY PATENT RIGHTS. COPYING OF ANY PART IS PROHIBITED AND OBJECTIONABLE.**

**NOTES :-**

1. ALL DIMENSIONS ARE IN MM UNLESS SPECIFIED.
2. ALL CS SURFACES SHALL BE PAINTED WITH HR PAINT
3. ALL WELDING AS PER ASME SEC.IX.
4. 100% D.P TEST FOR ALL WELDED JOINTS.
5. DRAWING APPROVAL REQUIRED PRIOR TO FABRICATION.

PART NO.	PB 5699 (SEAL PIVOT BELLOW)
SIZE NB	250 NB
1 BELLOWS & SLEEVES	SA240 TP 321
BELLOWS I.D/O.D	254 / 284; w=15; q=10
ACTIVE LENGTH= L2	40
NO.OF CONVS = N	4
THICK x PLY (nxt)	0.2 mm x 1PLY
AXIAL /LATERAL EXPN.	13 / 1 MM
AXIAL SPRING RATE	100lbs/in. (1.8 Kg/mm)
2 FLANGE - 1 ( UN - DRILLED)	IS 2062 PLATE FAB.
I.D / O.D / THK.	256 / 343 / 6.35 MM
3 FLANGE - 2 (DRILLED & CUT)	IS 2062 PLATE FAB.
I.D / O.D / THK.	256 / 356 / 6.35 MM
HOLE DIAXNO.OF HOLES(φMAXN)	3 HOLES OF φ14.28(120° APART ON φ317.5 PCD
CUTTING (L3) / DISTANCE (L4)	φ136.65 MM / 57.15 MM FROM HOLE CENTRE
4 COLLARS	SA240 TP 304
I.D / THK.	254 / 1 MM
5 INNER SHIELD (SLEEVE)	ANSI 321
I.D / LENGTH (L5)	254 MM (Min.) / 38 MM(Max.)
THICKNESS	1MM
OVERALL LENGTH- L1	80 MM
DESIGN TEMPERATURE	300 DEG.
DESIGN PRESSURE	0.2 KG/CM <sup>2</sup>
TEST PRESSURE	0.5 KG/CM <sup>2</sup>
QUANTITY	1(Sample)+24 Nos.=25Nos.



**FINAL BELLOW ASSEMBLY**

CLIENT : - BEML, MYSORE.

**ANNFLEX**  
BELLOWS & COMPENSATORS

SURFACE FINISH SYMBOLS		ISSUED FOR	
Symbol	Finish (CA) Micros	AS BUILT	10-2-10
0.4	TO	APPROVAL	09-09-09
0.8	TO	QUOTATION	09-08-09
1.6	TO		
4.0	TO		
8.0	TO		
25.0	TO		
✓	Welding other welding		
✓	Commercial Finish Produce		
✓	Remove Oil, Grease, Burrs & Projections removal.		
UNINSPECTED TOLERANCES FOR W/ONGS AS PER IS 7186-44-5		UNINSPECTED TOLERANCES FOR WELDING AS PER IS 8070 BR	
SCALE : NTS		SHEET:-	
		1 OF 1	REV:-
			2

TTT:R:  
SEAL PIVOT BELLOWS



P.O NO:-  
DRG. NO: Q01 / 09-10

CERTIFIED FOR CONSTRUCTION :-